

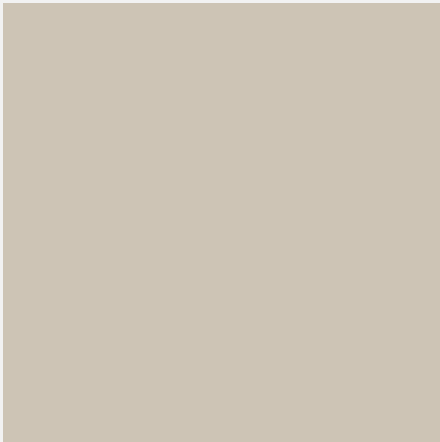
**SIERRAS MICHENER**

**Interior Painting Advisory Committee**

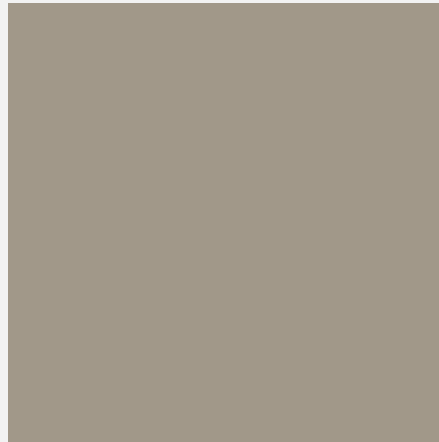
**INTERIOR PAINT – PHASE I**

May 2026

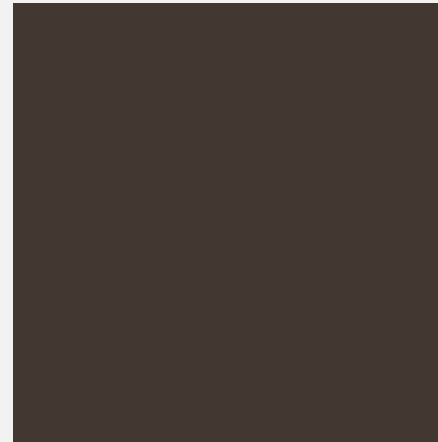
## INTERIOR PAINT COLOURS



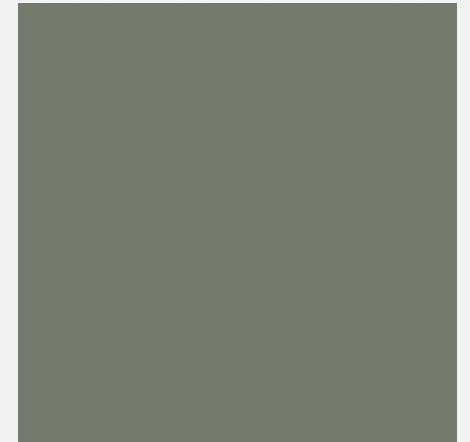
**Smokey Taupe**  
(Benjamin Moore 983)



**Briarwood**  
(Benjamin Moore HC-175)

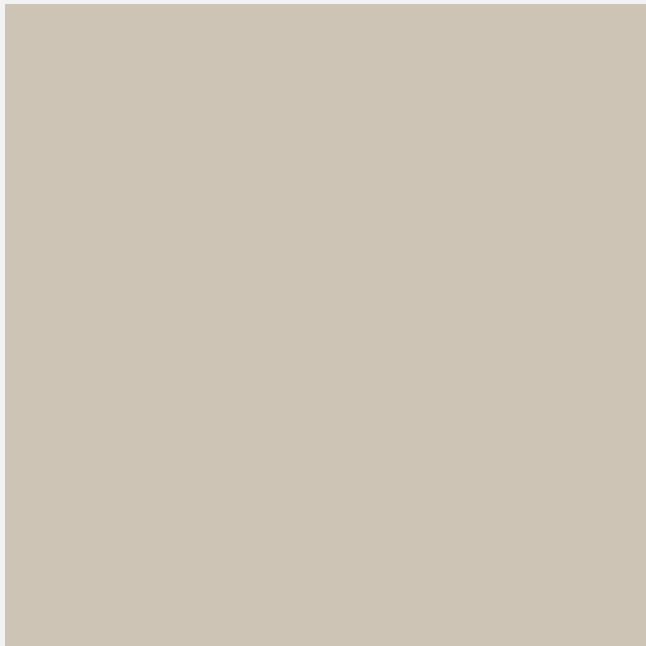


**Bittersweet Chocolate**  
(Benjamin Moore 2114-10)



**Thyme Green**  
(Dulux 1128-6)

## SMOKEY TAUPE



### All main interior walls:

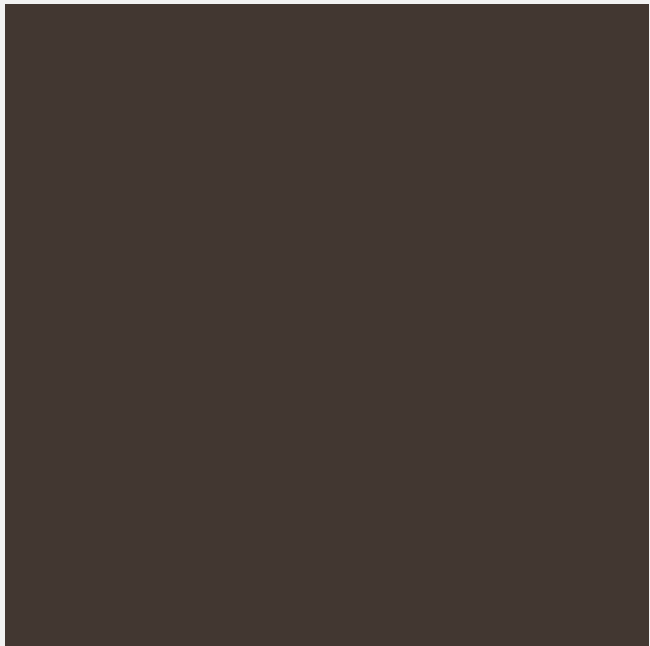
- Hallways
- Stairwells
- Lobby Entrance
- Garbage Rooms
- Gym
- Social Room
- Kitchen
- Evergreen Room
- Building Manager's Office
- Breezeway to Extendicare

## BRIARWOOD



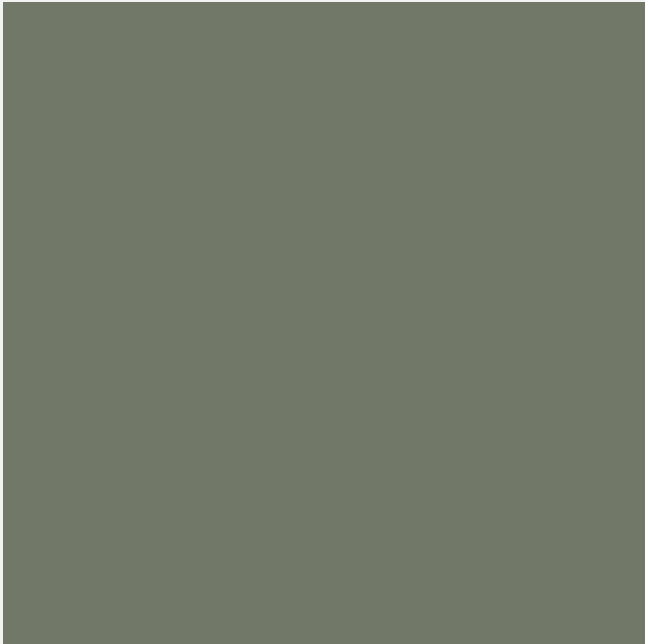
- Alcoves around Suite Doors
- Alcoves around Mailboxes
- Alcove on 2<sup>nd</sup> floor Lobby Hallway
- Alcove above Main Lobby Doors
- Pillars in Main Lobby
- Fire Doors
- Electrical Room Doors
- Garbage Room Doors
- Gym Doors
- Landing Doors
- Fire Extinguisher Covers

## BITTERSWEET CHOCOLATE



- Fireplace in Lobby
- Fireplace in Games Room
- Fireplace in Social Room
- Accent colour in Main Lobby

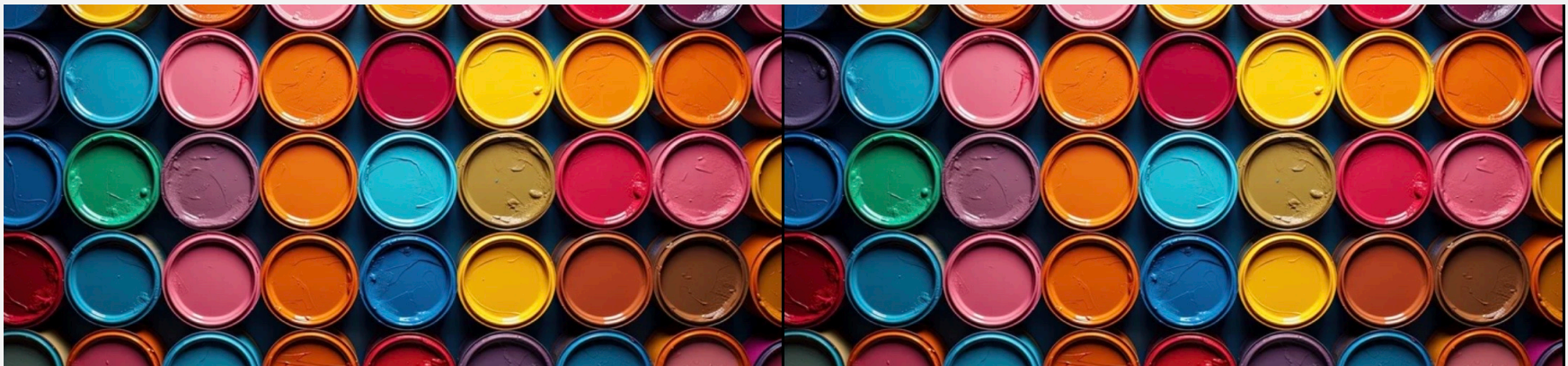
## THYME GREEN



- Main walls in Games Room
- Main walls in Library

## QUESTION?

How many **GALLONS OF PAINT** were used to complete the painting project in Phase I?



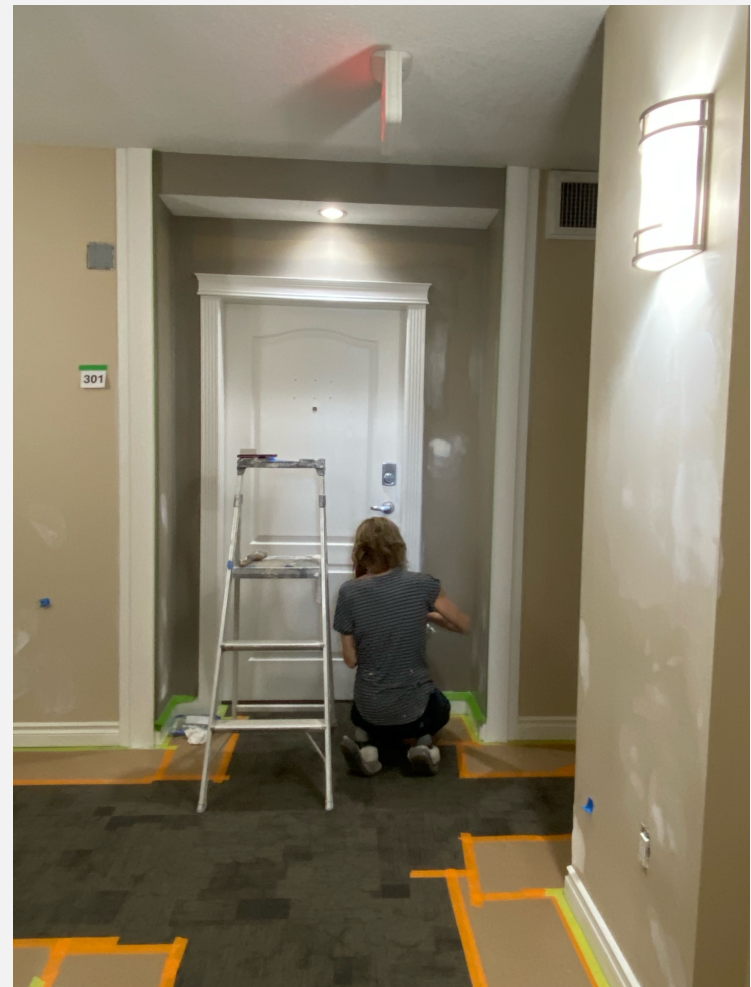
...continue watching for the answer!

## SUITES & HALLWAYS



WORK IN PROGRESS

## SUITES & HALLWAYS



WORK IN PROGRESS

## SUITES & HALLWAYS



WORK IN PROGRESS

## SUITES & HALLWAYS



WORK IN PROGRESS

## SUITES & HALLWAYS



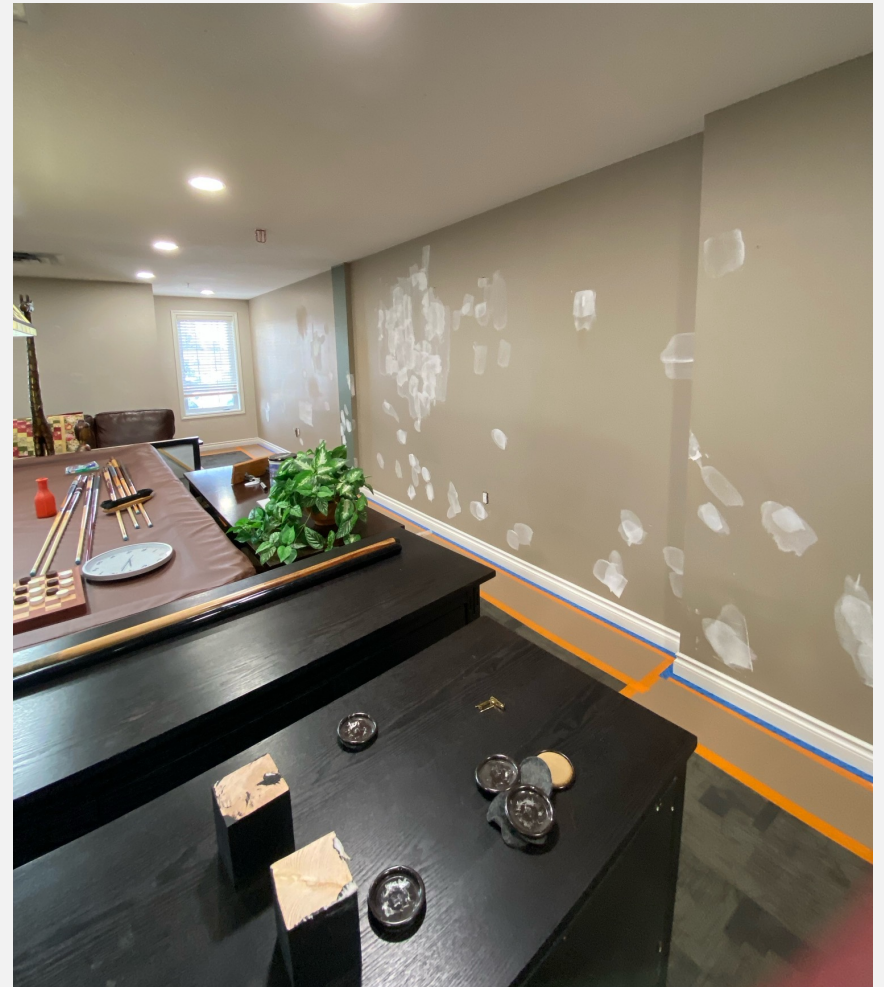
COMPLETED

## SUITES & HALLWAYS



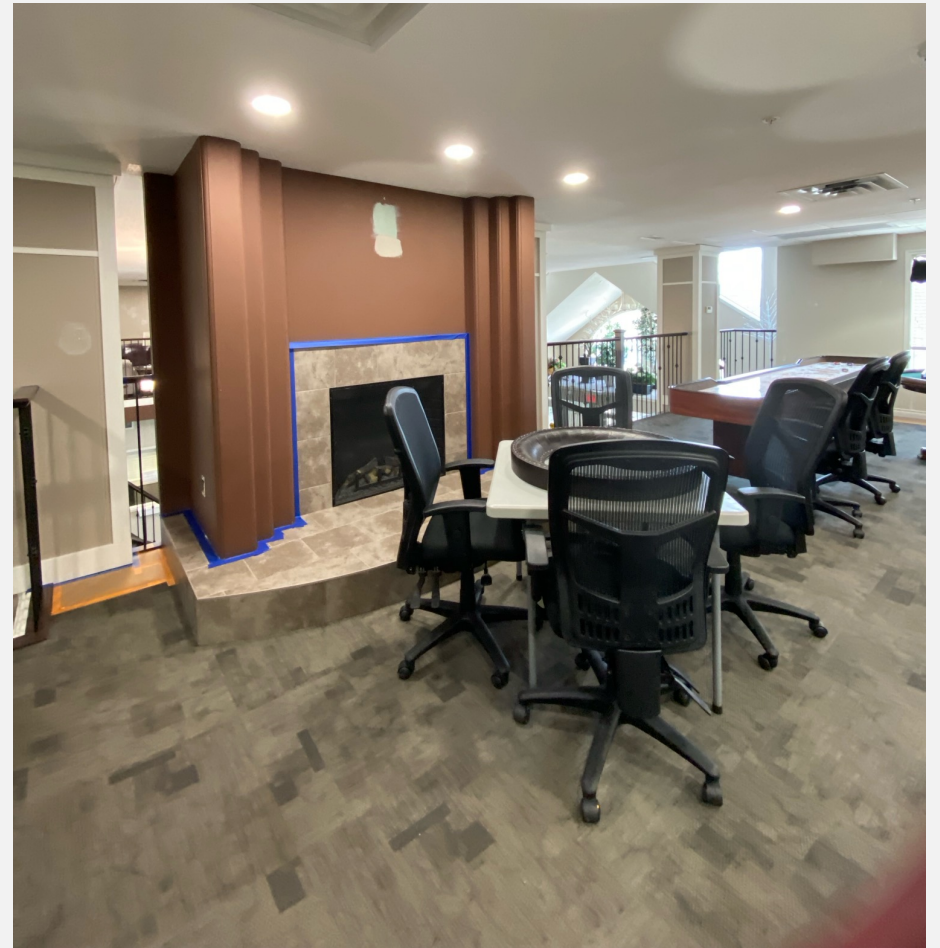
COMPLETED

## GAMES ROOM



WORK IN PROGRESS

## GAMES ROOM



WORK IN PROGRESS

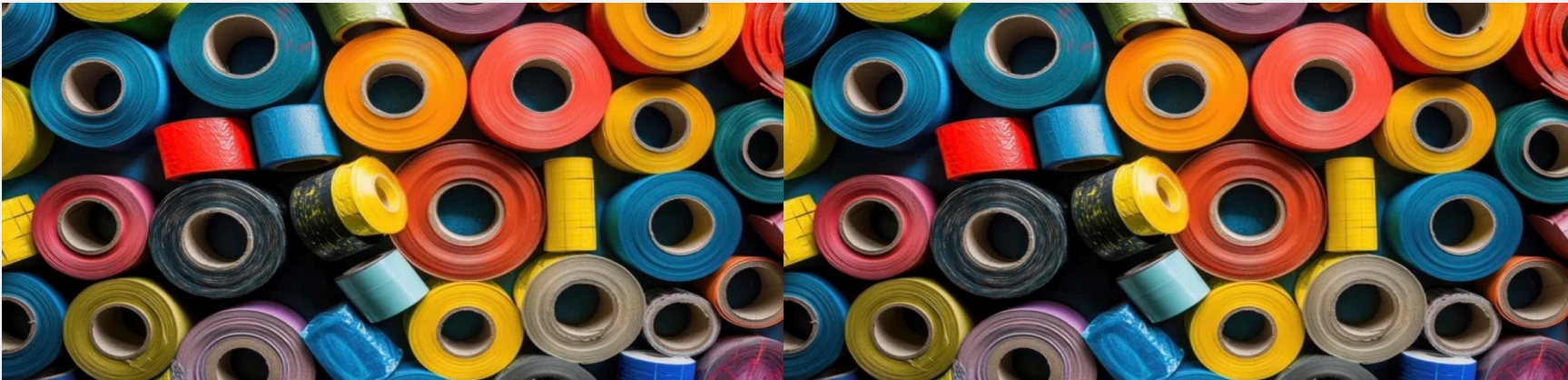
# GAMES ROOM



COMPLETED

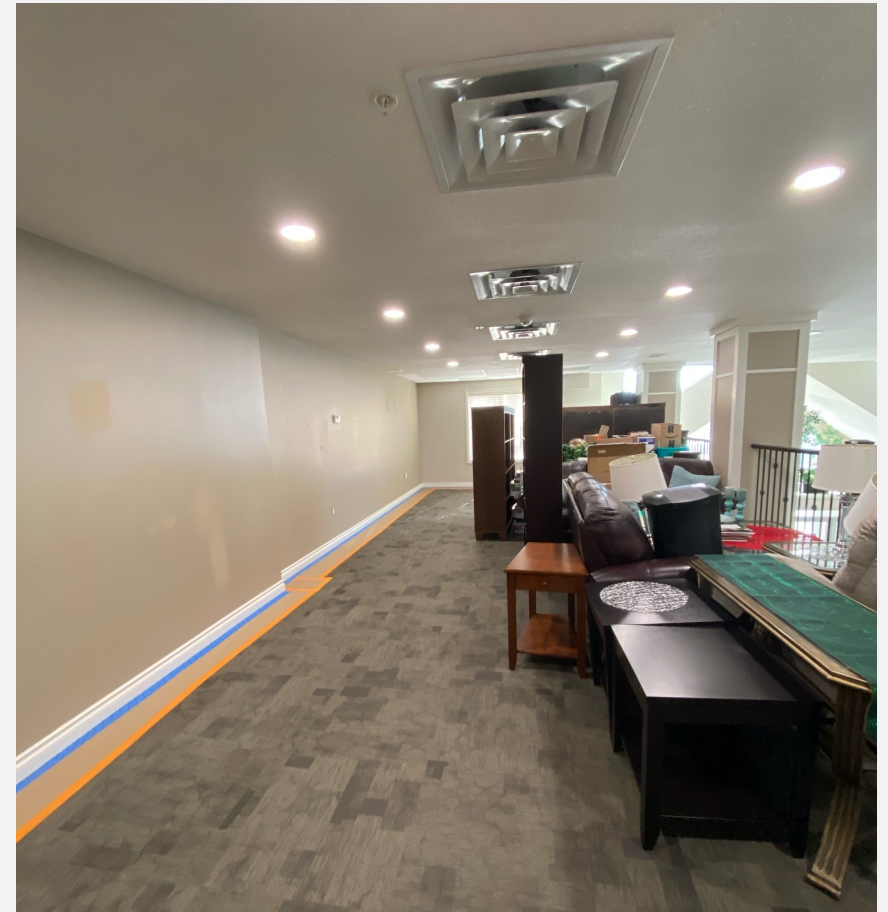
## QUESTION?

How many **ROLLS OF PAINTERSTAPE** were used to complete the painting project in Phase I?



...continue watching for the answer!

# LIBRARY



WORK IN PROGRESS

# LIBRARY



WORK IN PROGRESS

# LIBRARY



COMPLETED

## SOCIAL ROOM



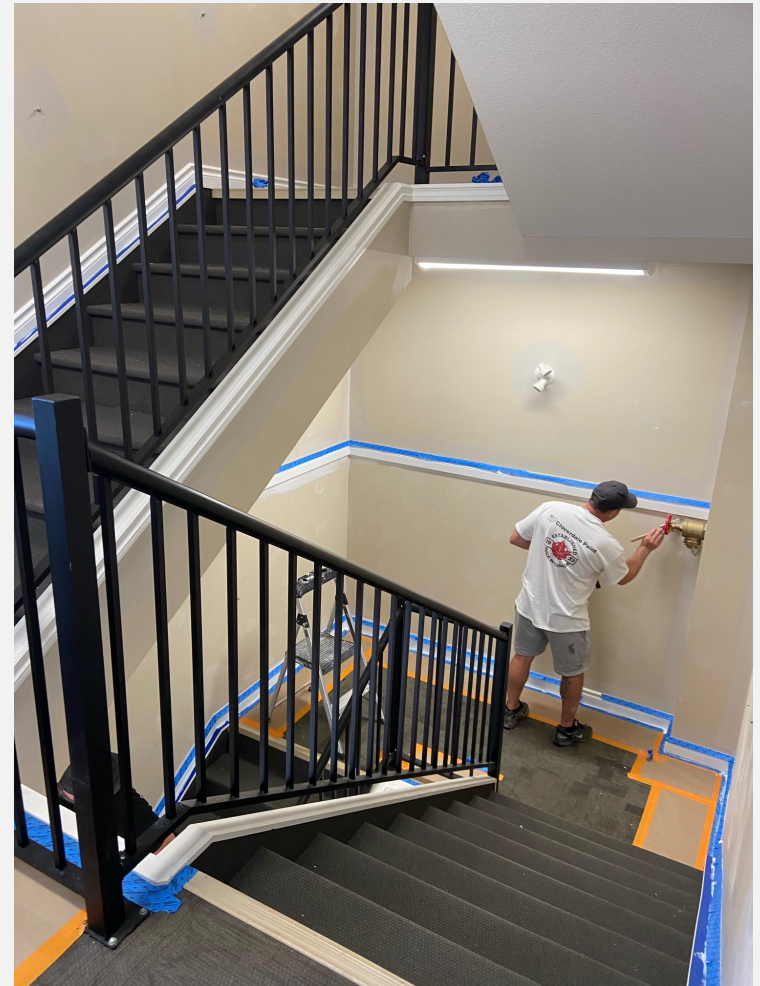
WORK IN PROGRESS

# SOCIAL ROOM



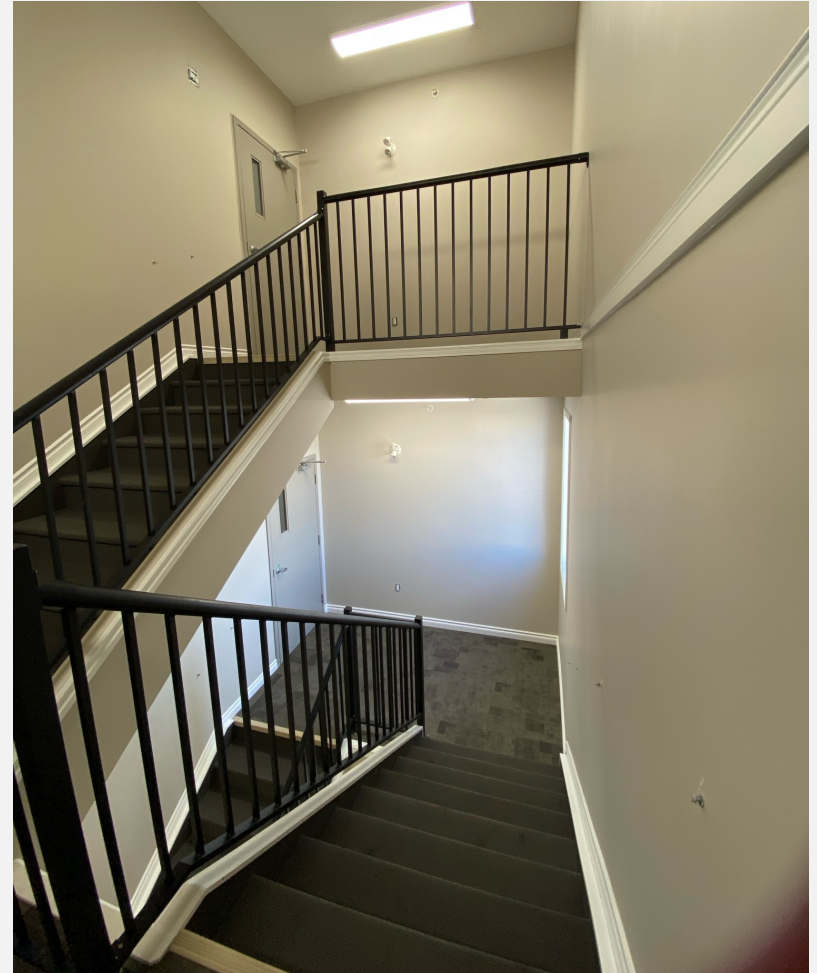
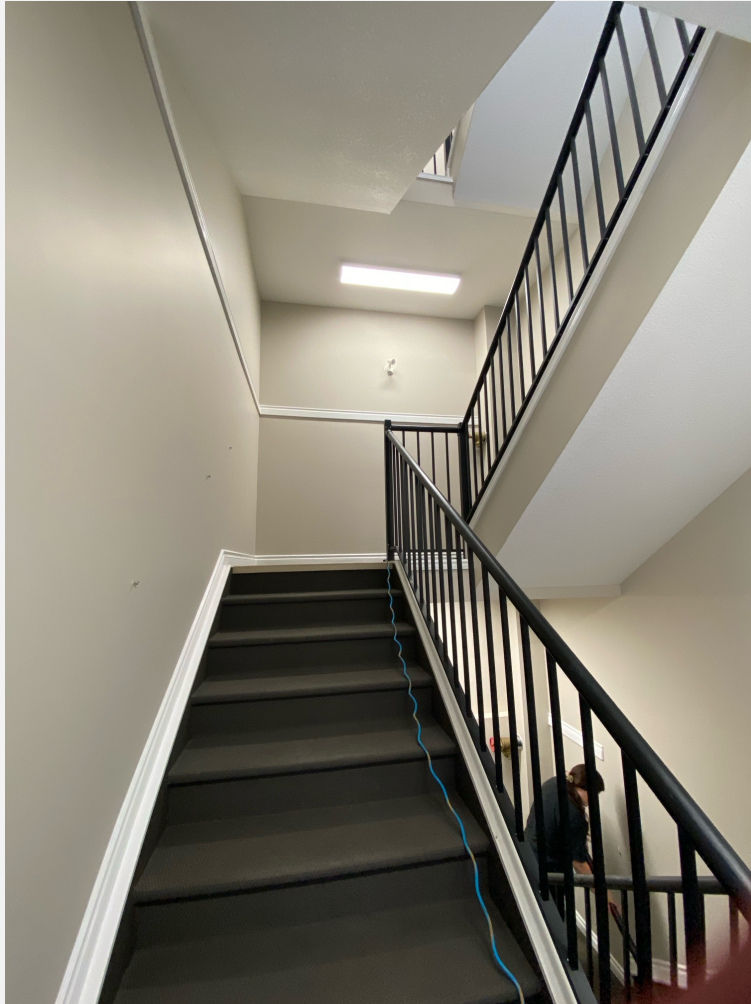
COMPLETED

# STAIRWELLS



WORK IN PROGRESS

# STAIRWELLS



COMPLETED

# KITCHEN



WORK IN PROGRESS

# KITCHEN



COMPLETED

## QUESTION?

How many **ROLLS OF BROWN PAPER** were used to complete the painting project in Phase I?



...continue watching for the answer!

## BREEZEWAY



WORK IN PROGRESS

BREEZEWAY



COMPLETED

# LOBBY



WORK IN PROGRESS

# LOBBY



WORK IN PROGRESS

# LOBBY



WORK IN PROGRESS

LOBBY



COMPLETED





## A FEW INTERESTING FACTS...



- A total of 134 gallons of paint were used in Phase I
- That's approximately 27 5 gallon pails or 1620 lbs (0.8 tons)!




- A total of 273 rolls of painters tape were used in Phase I
- At 60 yards per roll = 49,140 feet (15km)!



- A total of 30 rolls of brown paper were used in Phase I
- Also 60 yards per roll = 5,400 feet (1.7km)!

## INTERIOR PAINT – PHASE I



The Interior Painting Advisory Committee would like to thank all of the volunteers that gave of their time to assist in the completion of this project.

We could not have done it without you!

Painting in Phases 2 & 3 will commence in the new year (2027).

Thank you all for your patience & cooperation.